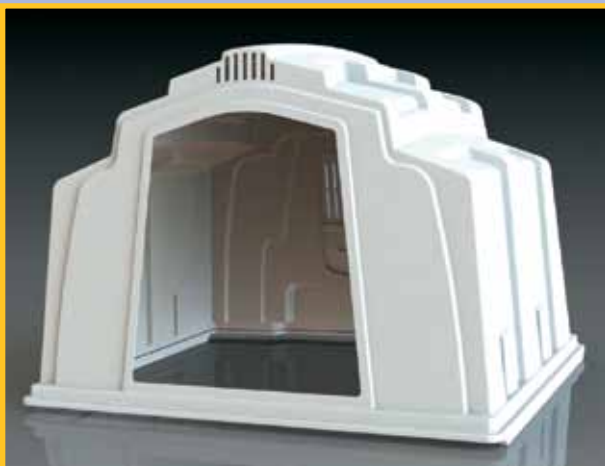
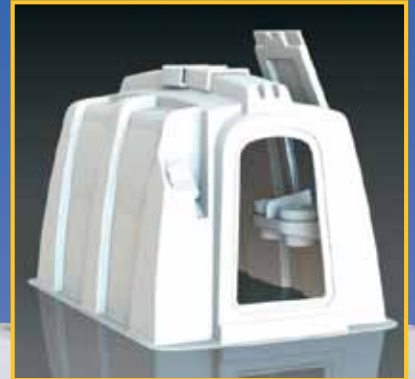


AGRI-PLASTICS

The Calf Housing Specialists



3-in-One Rear Door *Patents Pending



Adjustable Grill Vent



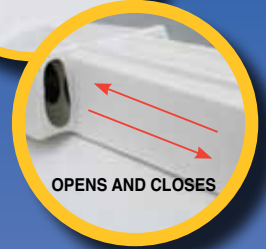
Bedding Door



And it can Rear Feed



EXPOSED VIEW



OPENS AND CLOSSES

Roof Ventilation

Deluxe EXL Calf Hutch (Extra Large)

10-Year
Limited
Warranty

Advanced Design

Most Advanced
Ventilation System

Molded From
Heavy Gauge
Plastic
no need
for steel frame

MORE STANDARD FEATURES = MORE VALUE

- Top Sliding Roof Vent
- **3-in-One** Rear Door
- Bottle Holder
- 2 Pails
- Choice of Left or Right Side Door
- Pail Manger

Featuring
3-in-One



Rear Door

DIMENSIONS	ENGLISH	METRIC
Hutch Dimensions	62" W x 98" L x 55" H	157.5 cm W x 248.9 cm L x 139.7 cm H
Hutch Weight	135 lbs	62 kg



Deluxe SL Calf Hutch (Standard Length)



MORE STANDARD FEATURES = MORE VALUE

- Top Sliding Roof Vent
- **3-in-One** Rear Door
- 2 Pails
- Choice of Left or Right Side Door
- Pail Manger

DIMENSIONS	ENGLISH	METRIC
Hutch Dimensions	48" W x 88" L x 53.5" H	121.9 cm W x 23.5 cm L x 135.9 cm H
Hutch Weight	95 lbs	41 kg

What sets this innovative rear feeder apart from the other hutches on the market:

- Designed for large operators to feed calves quickly
- Labour saving\$
- Door swings out of the way
- Door can remain open
- Easy access to feed with an ATV, TRUCK, ETC
- Feed stays out of the elements
- Easy to operate, no latches, 3-in-one door snaps shut
- 3-in-one door also has a sliding grill vent
- Easy to Bed

The ONLY Manger with Splash Guard & Pail Stoppers

- Splash guard prevents feed from getting wet, and liquids from getting contaminated
- Pail stoppers prevent pails from being knocked out
- Designed with built-in double-pail holder
- Two rugged poly pails included
- White vs black pails offered – calf starter usage will begin in 1-2 days vs 4 days for black pails
- Inside manger location protects feed... allows calves to continue eating, regardless of outside weather



Deluxe EXL Calf Rancher System (Extra Large)

Completely Opaque

Most Advanced Ventilation System



Featuring **3-in-One**



Rear Door

Molded From Heavy Gauge Plastic
no need for steel frame

DIMENSIONS	ENGLISH	METRIC
Hutch Dimensions	62" W x 98" L x 55" H	157.5 cm W x 248.9 cm L x 139.7 cm H
Hutch Weight	135 lbs	62 kg

Deluxe SL Calf Rancher System

10-Year Limited Warranty

Left or Right offset door or full cutout for warmer climates

Advanced Design



Featuring **3-in-One**



Rear Door

RANCHER SYSTEM STANDARD FEATURES

- Top Sliding Roof Vent
- **3-in-One** Rear Door
- Quick Release Fence Mount Pail Manger
- 2 Pails
- Optional Fence Mount Bottle Holder*
- Optional Calf Fence Panel*

*Must be selected at time of order

DIMENSIONS	ENGLISH	METRIC
Hutch Dimensions	48" W x 88" L x 53.5" H	121.9 cm W x 23.5 cm L x 135.9 cm H
Hutch Weight	95 lbs	41 kg

Available Accessories



EARLY STARTER BOWL

Shallow 4" pail for 1st weeks for faster feed consumption for healthier calves.



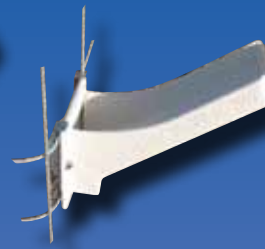
BOTTLE

2 or 3 quart poly bottle with soft rubber nipple.



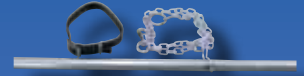
SL BOTTLE HOLDER

Fits 2 or 3 Qt bottles.



FENCE MOUNT BOTTLE HOLDER

Fits 2 or 3 Qt bottles.



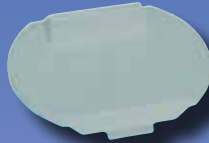
NECK STRAP WITH CHAIN

75" tether pipe & roof eye-bolts



CALF HUTCH MOUNT NIPPLE BUCKET

Includes nipple and mounting bracket. Also available with weather cover



OUTSIDE FEED WEATHER COVER

Protects nipple buckets from the weather.



HUTCH ANCHOR RODS

1/2" galvanized rebar for anchoring hutch to ground.



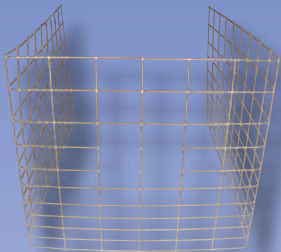
CALF HUTCH LIFT KIT

Makes moving hutches a one person job. Top entry point swivels for ether side or end lifting. Works with skid forks or bale spear.



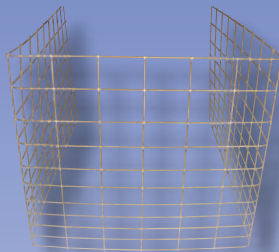
AGRI PLASTICS CALF JACKET

With quick release buckles.



CALF FENCE PANEL - CUT

Made from 1/4" diameter hot dipped galvanized steel. 42" H x 72" D x 48" W



CALF FENCE PANEL

Made from 1/4" diameter hot dipped galvanized steel. 42" H x 72" D x 48" W



SLF STORM DOOR

FOR EXTREME WEATHER CONDITIONS

This new model of storm door is used when using an outside wire panel. The SLF Storm Door will stay open against the wire fence. When you want to close it, it locks into place. (currently not available for EXL model)



AGRI-PLASTICS STORM DOOR

FOR EXTREME WEATHER CONDITIONS

Protects calves from the elements AND no more shovelling out your hutches! Easy to install, fits into place in seconds.



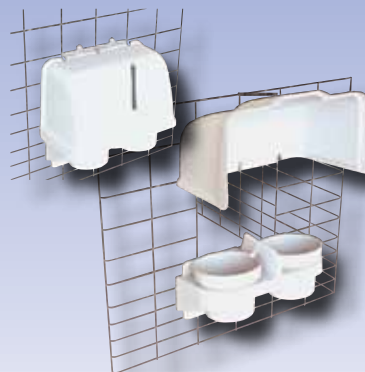
FRONT PLASTIC PIPES

2 1/2" Plastic pipes to keep calves inside.



HAY FEEDER

Sturdy, poly construction. Bolts to inside side wall of hutch toward rear - includes side door & latch, plus 3/8" dia. solid aluminium hinge pin (access opening will need to be cut in side wall).



WEATHER COVER

Protects feed from getting wet from the outside elements. Cover can also be left in the open position for dry seasons without rain or snow.



FENCE ATTACHMENT HARDWARE

Includes two rods (1/2" galv. tube) plus four eyebolts (3/8" x 2-1/2" and 1-1/2") with nuts and washers. (Panel Fence not included)



Patents Pending

Group Hutch with



Agri-Plastics Group Hutch Features

- Industry First: *Swing-Up-Rear* Large, Bedding Door with integrated rear grill vent.
- Industry First: Molded in one piece for superior strength – no rivets to break loose
- Front ridge top roof vent, rear rotary top vent
- Extra hutch height for longer growth periods.
- Integrated poly skid – will not freeze to ground like wood skid
- 10 Year warranty
- Truly opaque

When calves are raised in calf hutches and then, after weaning are placed with a large group in it causes much stress on the calf. By transitioning weaned calves into a group hutch you will eliminate the competition for food and water, and the calf will adapt to being with others. Every Agri-Plastics Group Hutch is built to last, we've made a thick-walled unit, not thin and flimsy like others.

Swing-Up-Rear Bedding Door

DIMENSIONS	ENGLISH	METRIC
Hutch Dimensions	106" W x 89" L x 79" H	269.2 cm W x 226.1 cm L x 200.7 cm H
Hutch Weight	250 lbs	113.4 kg



Closed Position



Easy open *Swing-Up-Rear* Bedding Door

Galvanized Pen System for Group Hutch



* Water bucket not included - for display only

Group Transition Pen Features

- Side panels are made from heavy gauge metal
- Sealed plastic feed trough reduces feed waste
- All corners simply pin together for fast disassembly when moving
- 192" (487.7cm) long side panels connect directly to Group Hutch
- Two models available, a 108" (274.3cm) wide model with side water hole and a 138" (350.5cm) wide model with front water hole



Open Position



Easy to Bed Group Hutch



Indoor Calf Raising Pens with

Free Standing Pen



Agri-Plastics Drop-In-Go Pen System

- Industry First: Drop~In~Go Pen System- no long L-Rods
- Heavy Duty Rear lock plate -- No plastic tabs to break off
- Heavy Duty Front feeding door with STEEL FRAME
- Side panels have integrated calf dividers -- no extra parts to assemble
- Industry First: Adjustable door and bucket height -- no need to reassemble front door
- Freestanding units can be mounted side by side and back to back
- Wall mount also available
- Standard rear rotary vents on freestanding model
- Separate water and feed buckets --prevents food contamination
- Sizes available 4ft, 5 ft, 6 ft and 7 ft lengths
- 10 year warranty



Heavy Duty Front Feeding Door with Steel Frame - Super Strong



Patents Pending



Drop-In-Go Pen System



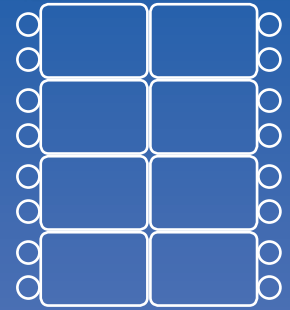
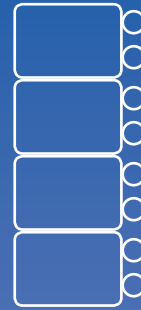
Side and rear panels require no long connecting pins, simply **Drop-In-Go !!!**

Indoor Calf Raising Pens with



Wall Mounted Pen

Sample configurations to suit your needs



floor space required	7' model : 102" / 259 cm	floor space required	7' model : 195" / 495 cm
	6' model : 90" / 229 cm		6' model : 171" / 434 cm
	5' model : 78" / 198 cm		5' model : 147" / 373 cm
	4' model : 66" / 168 cm		4' model : 123" / 312 cm

7' Panel	ENGLISH	METRIC
Outside Dimensions	8' 5" L x 50" W x 43" H	256.5 cm L x 127 cm W x 109.2 cm H
Inside Living Area	7' L x 46" W x 43" H	213.4 cm L x 116.8 cm W x 109.2 cm H
6' Panel	ENGLISH	METRIC
Outside Dimensions	7' 5" L x 50" W x 43" H	226 cm L x 127 cm W x 109.2 cm H
Inside Living Area	6' L x 46" W x 43" H	182.8 cm L x 116.8 cm W x 109.2 cm H

5' Panel	ENGLISH	METRIC
Outside Dimensions	6' 5" L x 50" W x 43" H	195.5 cm L x 127 cm W x 109.2 cm H
Inside Living Area	5' L x 46" W x 43" H	152 cm L x 116.8 cm W x 109.2 cm H
4' Panel	ENGLISH	METRIC
Outside Dimensions	5' 5" L x 50" W x 43" H	165 cm L x 127 cm W x 109.2 cm H
Inside Living Area	4' L x 46" W x 43" H	122 cm L x 116.8 cm W x 109.2 cm H

Available Accessories



HEADLOCK



QUICK RELEASE BOTTLE HOLDER



WALL BRACKET



2 OR 3 QUART POLY BOTTLE WITH SOFT RUBBER NIPPLE



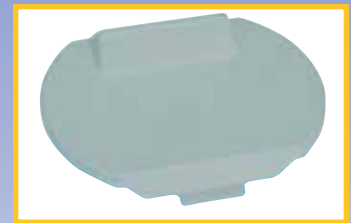
HANGING POLY HAY FEEDER



GROUP HOUSING KIT



FEEDING NIPPLE BUCKET



FEEDING BUCKET COVER



Front panel pin *Drop-In-Go*



Pin Holder Storage
"No more lost pins"

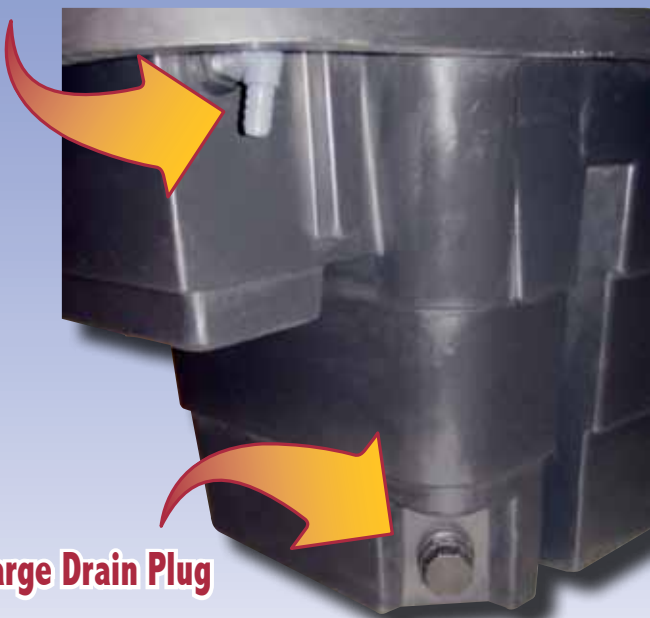
Stock Tanks *with float covers*

Agri-Plastics Stock tanks offer a strong exterior, and a protected float valve compartment, designed to keep your float out of the elements, and away from the cows. Varying in size our stock tanks come in a round 175 gallon, and in a round or rectangular version 100 gallon, all with the float cover.



MODEL	CAPACITY	DIMENSIONS	HEIGHT	WEIGHT
AG-1001	700 L - 175 US GAL	57"/144.8 cm diameter	28"/71.1 cm	75 LBS./34 KG
AG-1002	400 L - 100 US GAL	43"/109.2 cm diameter	28"/71.1 cm	50 LBS./22.7 KG
AG-1003	400 L - 100 US GAL	64" x 30"/162.6 cm	28"/71.1 cm	55 LBS./24.9 KG

3/4" Hose Connection



3/4" Float Valve



Large Drain Plug

Feed / Silage Carts

Our carts are made of a heavy duty polyethylene which is roto - molded to create a seamless cart. You will not need to worry about this cart having build ups, rusting or rotting, because like always we design our products with farmers in mind. Our carts are heat, cold, sunlight and leak resistant, not to mention resistant to silage acids and feed additives. Cornering is a breeze with the cart rolling on its powder coated one piece steel frame with 4 ply pneumatic wheels with tubes. The various sizes are beneficial to any farmer no matter how large your operation may be. Cut your feeding time down and make feeding easier.

CAPACITY	LENGTH	WIDTH	HEIGHT	SWIVEL WHEELS	REAR WHEELS
8 Bushels	44"/111.8 cm	21"/53.3 cm	36"/91.4 cm	10" X 3.50"/ 25.4 cm x 8.9 cm	10" X 3.50"/ 25.4 cm x 8.9 cm
12 Bushels	45"/114.3 cm	28"/71.1 cm	36"/91.4 cm	10" X 3.50"/ 25.4 cm x 8.9 cm	10" X 3.50"/ 25.4 cm x 8.9 cm
18 Bushels	57"/144.8 cm	28"/71.1 cm	36"/91.4 cm	10" X 3.50"/ 25.4 cm x 8.9 cm	10" X 3.50"/ 25.4 cm x 8.9 cm
17 Bushels	63"/160 cm	28"/71.1 cm	38"/96.5 cm	10" X 3.50"/ 25.4 cm x 8.9 cm	16" X 4.0"/ 40.6 cm x 10.2 cm
20 Bushels	63"/160 cm	35"/88.9 cm	38"/96.5 cm	10" X 3.50"/ 25.4 cm x 8.9 cm	16" X 4.0"/ 40.6 cm x 10.2 cm



17 & 20 bushel

Footbath

40 Gallons - 32" x 78" x 6" - Black
151.4 l - 81.3 cm x 198 cm x 15.2 cm

Using a poly footbath will benefit your herd in several ways, it will help to prevent hairy warts, foot-rot and heel erosion not to mention other bacteria from creeping into your cow's hooves. With its cross rib bottom this footbath is designed to spread hooves wider for better penetration.

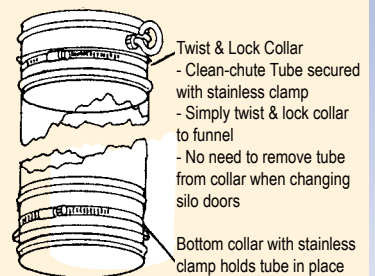
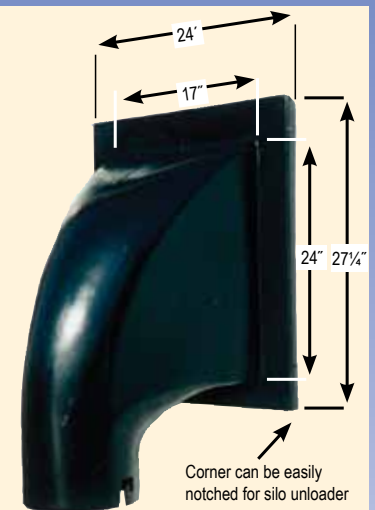
This product is built with a high density polymer with double sided walls making it solid enough that a wood frame is not needed for support. Our footbaths will not rust, rot, puncture or crack, making it a far superior footbath than any other on the market.



Also available: **Boot Bath** for use in barn doorways.
26" x 18" x 4", 66 cm x 45.7 cm x 10.2 cm

Poly Silo Clean Chute

Our *Poly Clean Chute Funnel* is so simple to install, it's flange is easily adjusted to your silo door size by any type of wood saw. This clog resistant chute is made of polymer plastic which is far more durable than fiberglass. The top and bottom twist & lock collars are made from the same durable polymer and fasten the tubing to the chute with great security. Due to the excellent grip of the collars there is no need to remove tubing when changing silo doors, saving you time and energy!



Poly Brisket Board



Agri-Plastics Poly Brisket Board is a durable solution for any new or existing stall system. Its design is ideal for protecting dew claws and allowing your cattle to extend their legs in a natural manner. Due to the natural curve in the brisket it is strong enough to support your cattle's weight. The brisket is made of a heavy duty 1/4" thick poly that will not crack, chip or splinter. The board comes in 96" (243.8cm) lengths with pre drilled holes along the sides for easy installation.



Agri-Plastics Mfg. is owned and operated by Third Generation Dairymen. It is through hands on experience that Agri-Plastics develops and tests their products. Agri-Plastics mission is to offer the best quality products for the farming industry by designing products that meet the customers expectations, while establishing a world reputation for reliability and durability.



AGRI-PLASTICS

www.calfhutch.com

Canadian Address:
Agri-Plastics Mfg.
7793 Young St.
Grassie ON L0R 1M0
Direct dial: 905-945-3116

1-888-231-3575
www.agri-plastics.net email: agriplastics@aol.com
Fax: 905-945-5359

US Address:
Agri-Plastics Inc.
3731 Luker Rd.
Cortland, NY 13045
Direct dial: 607-591-0103